

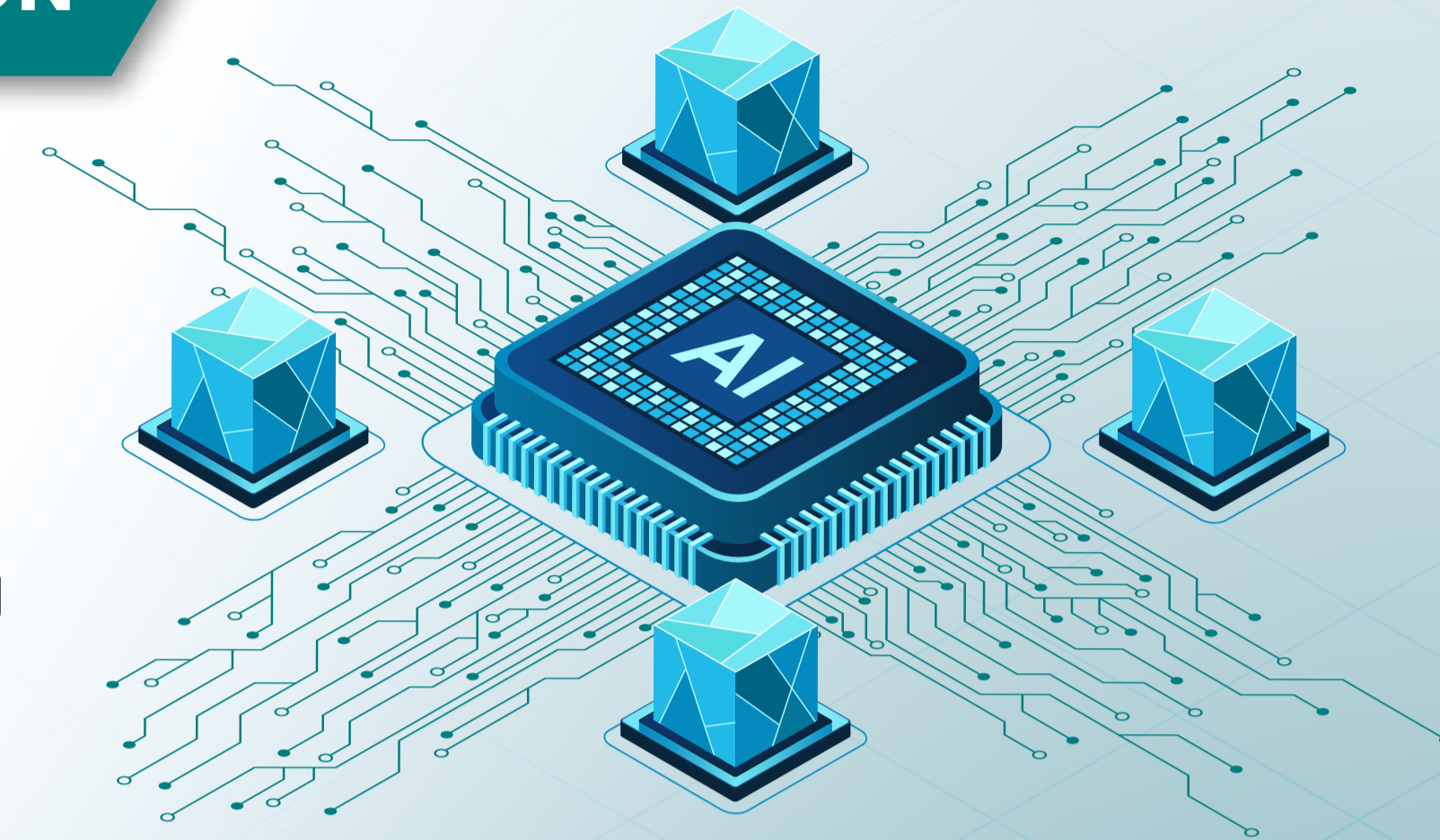
A practical AI + OSINT workflow for misinformation detection

AI AND OSINT AS A STRONGER FOUNDATION FOR MISINFORMATION DETECTION

Misinformation detection is no longer just about identifying a false statement. It is about understanding the broader environment in which that statement appears, spreads, mutates, and gains influence.

That is why AI and OSINT work so well together. OSINT provides the open-source visibility needed to monitor digital information environments. AI helps turn that visibility into structure by extracting narratives, recognizing entities, highlighting suspicious patterns, and reconstructing how claims evolve over time.

For organizations that need to move beyond fragmented monitoring and toward more actionable intelligence, this combination offers a stronger foundation for analysis.



THE WORKFLOW

Workflow combines machine-supported scale with human-led interpretation.



Ingest

Collect signals from publicly available digital sources such as news, social media, blogs, forums, and datasets.



Organize

Use AI to group content into themes, narratives, and related clusters.



Identify

Detect entities such as people, organizations, locations, and events associated with a claim.



Trace

Reconstruct how the narrative has evolved and whether it has appeared before in other forms.



Flag

Surface unusual amplification patterns, repeated behavior, or suspicious coordination signals.



Escalate

Pass high-priority findings to analysts for contextual review and validation.